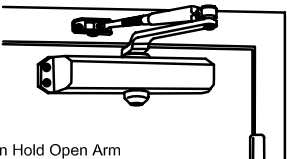
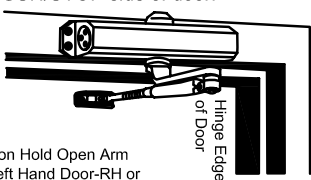
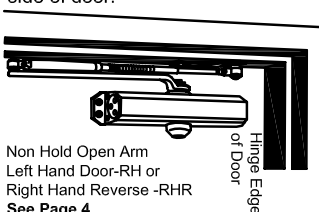


C3000 SERIES DOOR CLOSERS

INSTALLATION INSTRUCTIONS

SIZE1, SIZE2,SIZE3, SIZE 4, SIZE 5,Non-Hold Open

INSTALLATION APPLICATION

<p>Regular Arm installation Closer installs on PULL/HINGE side of door</p>  <p>Non Hold Open Arm Left Hand Door-RH or Right Hand Reverse -RHR See Page 2</p>	<p>Top Jamb Installation Closer Installs on Frame on PUSH/STOP side of door.</p>  <p>Non Hold Open Arm Left Hand Door-RH or Right Hand Reverse -RHR See Page 3</p>	<p>Parallel Arm Installation Closer installs on PUSH/STOP side of door.</p>  <p>Non Hold Open Arm Left Hand Door-RH or Right Hand Reverse -RHR See Page 4</p>
---	---	---

DOOR CLOSER ADJUSTMENT

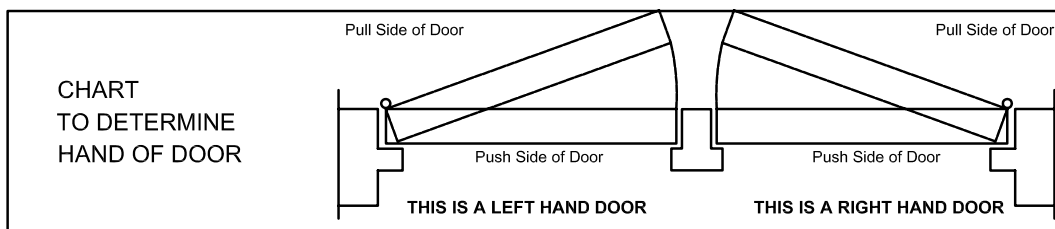
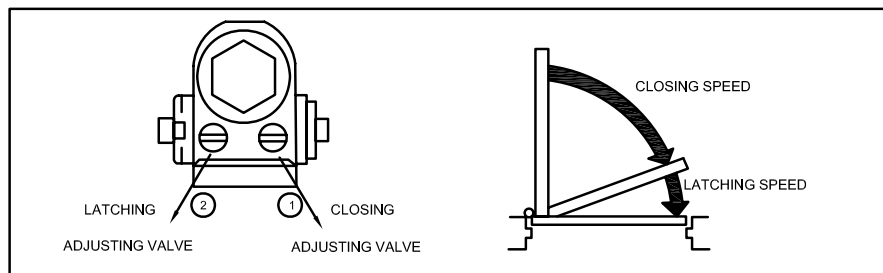
CLOSING CYCLE

NOTE:CLOSING arcs(CLOSE and LATCH) are controlled two (2)separate speed adjusting valves adjust the CLOSING speed first, then adjust the LATCHING speed.

- 1.CLOSING speed adjustment is accomplished by full rotations of the speed adjusting valve.
 - Turn the speed adjustment valve **CLOCKWISE** for a **SLOWER CLOSE** arc closing speed.
 - Turn the speed adjustment valve **COUNTER-CLOCKWISE** for a **FASTER CLOSER** arc closing speed.
2. LATCH speed adjustments is accomplished by full rotations of the speed adjusting valve.
 - Turn the speed adjustment screw **CLOCKWISE** for a **SLOWER LATCHE** arc closing speed.
 - Turn the speed adjustment screw **COUNTER-CLOCKWISE** for a **FASTER LATCH** arc closing speed.

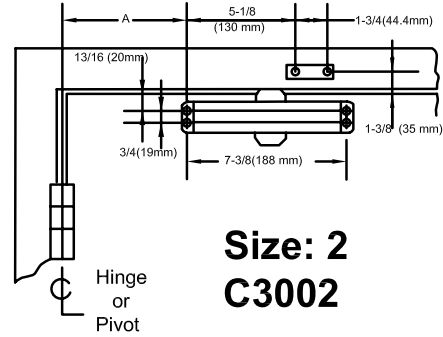
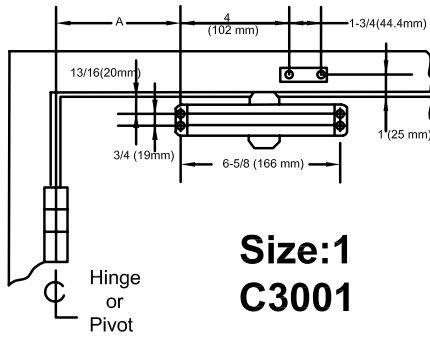
CAUTIONS!

Do not turn speed adjusting valve more than two (2) full turns counter-clockwise from its factory set position,as two speed adjusting valves could become dislodged from the door closer body. resulting in the loss of internal fluid and failure of the device.



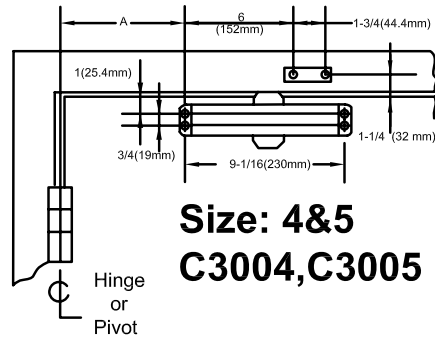
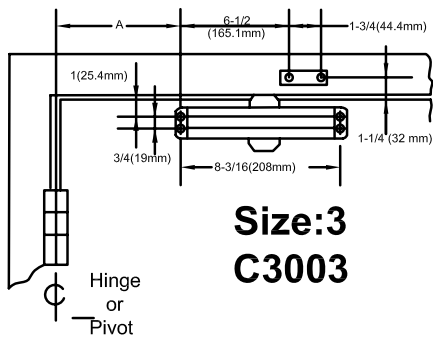
Installation Instructions for REGULAR ARM (PULL SIDE) Mounting

THIS TEMPLATE COVERS REGULAR ARM INSTALLATIONS TO 180° OPENING.



Right hand door shown
Left hand in opposite
Dimensions are in inches
Do not scale drawing

OPENING	DIM.A C3001, Size 1	DIM.A C3002, Size 2
To 120°	6-3/16 (157 mm)	5-1/8 (130 mm)
120°-180°	4-1/8 (105 mm)	4 (101.6 mm)



Right hand door shown
Left hand in opposite
Dimensions are in inches
Do not scale drawing

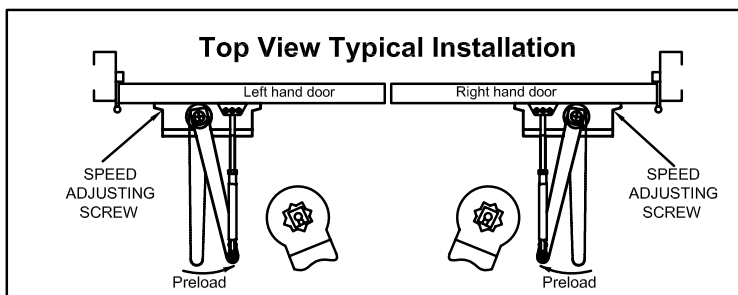
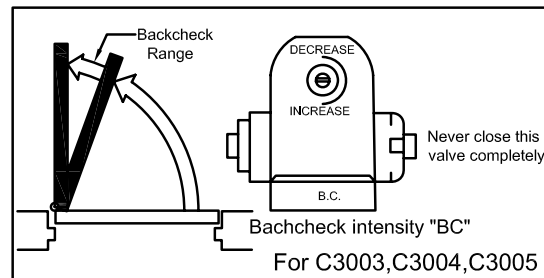
OPENING	DIM.A C3003, Size 3	DIM.A C3004&C3005, Size 4&5
To 120°	6-1/2 (165.1 mm)	6 (152 mm)
120°-180°	4 (101.6 mm)	3-1/2 (89 mm)

INSTALLATION INSTRUCTONS

1. Select door opening and use dimensions shown above, mark four (4) holes on frame door and two (2) holes on door of arm shoe.
2. Drill pilot holes in door and frame for # 14 all-purpose screws or drill or tap for 1/4-20 machine screw.
3. Install forearm/arm shoe assembly to door using screws provided.
4. Mount closer on frame using screw provided. SPEED ADJUSTING VALVE MUST BE POSITIONED TOWARD HINGE EDGE.
5. Install main arm to top pinion shaft, perpendicular to frame when assembled to preload main arm (illustration below). Secure forearm to main arm with screw/washer assembly provided.
6. Adjust length of forearm so that forearm is perpendicular to frame when assembled to preload main arm (illustration below). Secure forearm to main arm with screw washer assembly provided.
7. Snap pinion cap over shaft at bottom of closer.
8. Adjust closing speed of door. following instructions as shown page 1.

OPEN CYCLE

NOTED:
These instructions apply to closers equipped with backcheck.
To increase backcheck intensity, turn valve marked "BC" clockwise.
To decrease backcheck intensity, turn valve marked BC counter-clockwise

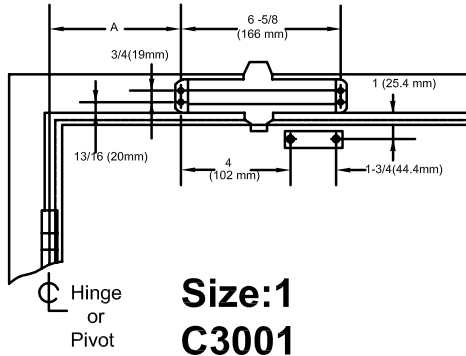


GENERAL LOCK

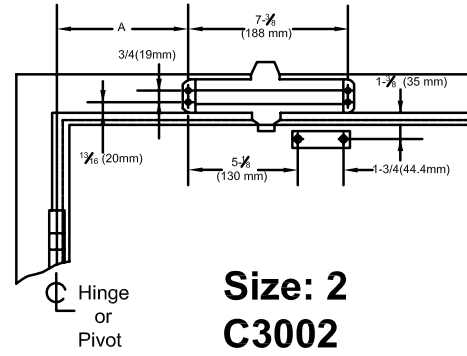
Quality & Value™

Installation Instructions for TOP JAMB (PUSH SIDE) Mounting

THIS TEMPLATE COVERS REGULAR ARM INSTALLATIONS TO 180° OPENING.



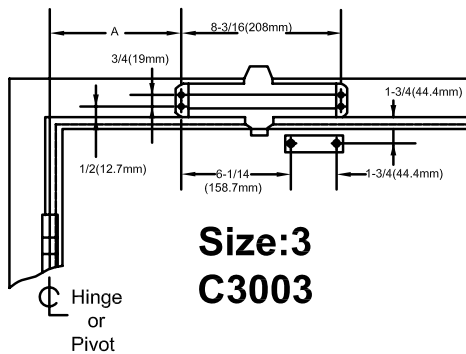
**Size:1
C3001**



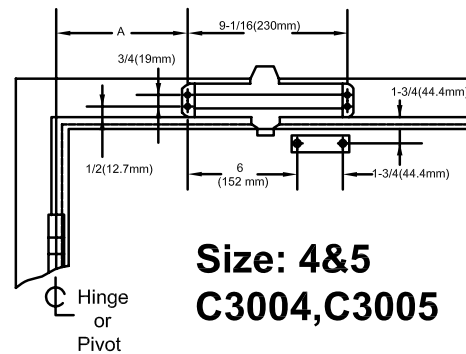
**Size: 2
C3002**

Left hand door shown
Right hand in opposite
Dimensions are in inches
Do not scale drawing

OPENING	DIM.A C3001, Size 1	DIM.A C3002, Size 2
To 120°	6-3/16 (157mm)	5-1/8 (130 mm)
120°-180°	4-1/8 (105mm)	4 (101.6 mm)



**Size:3
C3003**



**Size: 4&5
C3004, C3005**

Left hand door shown
Right hand in opposite
Dimensions are in inches
Do not scale drawing

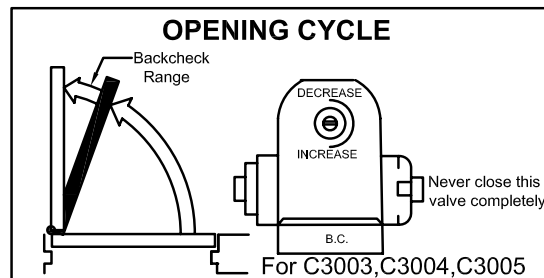
OPENING	DIM.A C3003, Size 3	DIM.A C3004&C3005, Size 4&5
To 120°	6-1/2 (165.1mm)	6 (152 mm)
120°-180°	4 (101.6mm)	3-1/2 (89mm)

INSTALLATION INSTRUCTONS

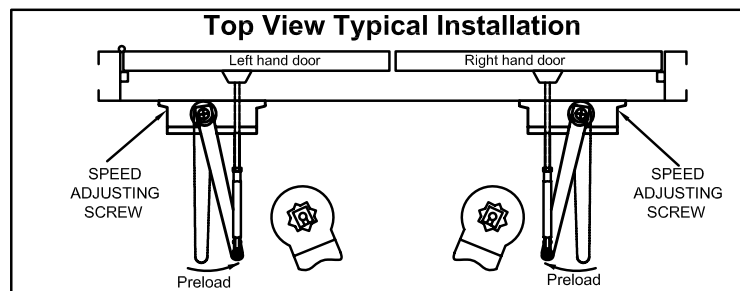
1. Select door opening and use dimensions shown above, mark four (4) holes on frame door and two (2) holes on door of arm shoe.
2. Drill pilot holes in door and frame for # 14 all-purpose screws or drill or tap for 1/4-20 machine screw.
3. Install forearm/arm shoe assembly to door using screws provided.
4. Mount closer on frame using screw provided. SPEED ADJUSTING VALVE MUST BE POSITIONED TOWARD HINGE EDGE.
5. Install main arm to top pinion shaft, perpendicular to frame when assembled to preload main arm (illustration below). Secure forearm to main arm with screw/washer assembly provided.
6. Adjust length of forearm so that forearm is perpendicular to frame when assembled to preload main arm (illustration below). Secure forearm to main arm with screw/washer assembly provided.
7. Snap pinion cap over shaft at bottom of closer.
8. Adjust closing speed of door. following instructions as shown page 1.

OPEN CYCLE

NOTED:
These instructions apply to closers equipped with backcheck.
To increase backcheck intensity, turn valve marked "BC" clockwise.
To decrease backcheck intensity, turn valve marked BC counter-clockwise



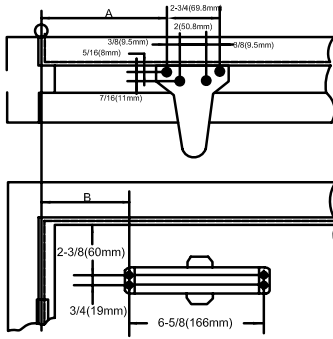
Top View Typical Installation



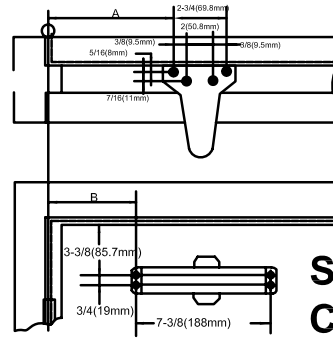
Installation Instructions for PARALLEL ARM (PUSH SIDE) Mounting

THIS TEMPLATE COVERS REGULAR ARM INSTALLATIONS TO 180° OPENING.

Parallel bracket accessory required



Size: 1
C3001

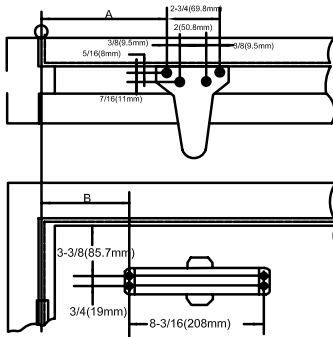


Size: 2
C3002

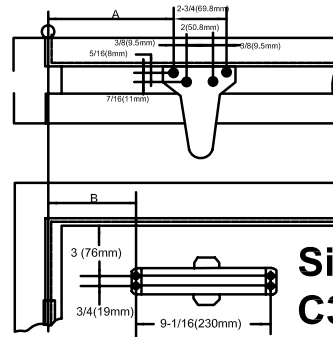
Hinge or Pivot

Left hand door shown
Right hand in opposite
Dimensions are in inches
Do not scale drawing

OPENING	DIM.A C3001, Size 1	DIM.B C3001, Size 1	DIM.A C3002, Size 2	DIM.B C3002, Size 2
120°-180°	4-5/8 (117mm)	3-1/2 (90mm)	7-1/16 (180mm)	4-3/4 (120mm)



Size: 3
C3003



Size: 4&5
C3004, C3005

Left hand door shown
Right hand in opposite
Dimensions are in inches
Do not scale drawing

OPENING	DIM.A C3003, Size 3	DIM.B C3003, Size 3	DIM.A C3004&C3005 Size 4&5	DIM.B C3004&C3005 Size 4&5
To 120°	10-3/4 (273mm)	7-13/16 (198.4mm)	7-3/4 (197mm)	6-1/8 (156mm)
120°-180°	8-3/4 (222.2mm)	5-5/8 (142.9mm)	5-3/4 (146mm)	4-1/8 (105mm)

INSTALLATION INSTRUCTONS

- Select door opening and use dimensions shown above, mark four (4) holes on frame door and two (2) holes on door of arm shoe.
- Drill pilot holes in door and frame for # 14 all-purpose screws or drill or tap for 1/4-20 machine screw.
- Intall forearm/arm shoe assembly to door using screws provided.
- Mount closer on frame using screw provided. SPEED ADJUSTING VALVE MUST BE POSITIONED TOWARD HINGE EDGE.
- Install main arm to top pinion shaft, perpendicular to frame when assembled to preload main arm (illustration below). Secure forearm to main arm with screw/washer assmebly provided.
- Adjut length of forearm so that forearm is perpendicular to frame when assmebled to preload main arm (illustration below). Secure forearm to main arm with screw /washer assembly provided.
- Snap pinion cap over shaft at bottom of closer.
- Adjust closing speed of door. following instructions as shown page 1.

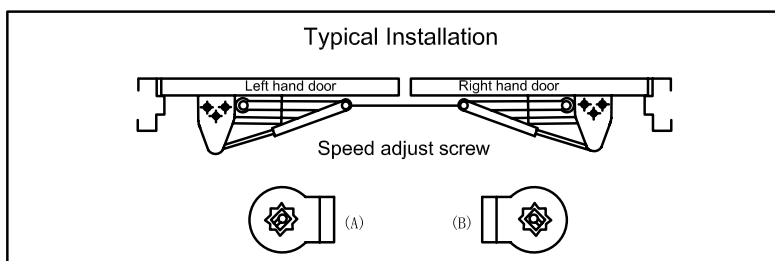
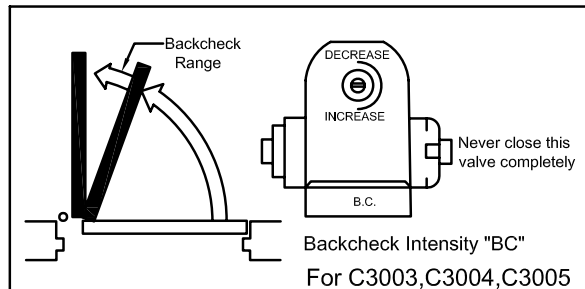
OPEN CYCLE

NOTED:

These instructions apply to closers equipped with backcheck.

To increase backcheck intensity, turn valve marked "BC" clockwise.

To decrease backcheck intensity, turn valve marked BC counter-clockwise



GENERAL LOCK

Quality & Value™